



# 罐底球阀

## BALL VALVE AT THE TANK BOTTOM



### 应用

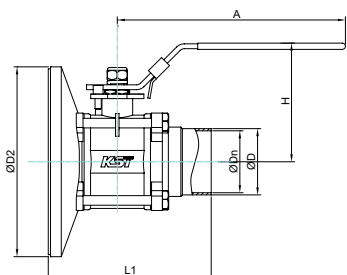
该球阀是一款专门设计应用于压力容器和储罐设备的排空和放料的罐底阀门，全球阀座和密封自动补偿设计，因此具有压力高，耐温高，扭矩小，寿命长等特点，满足于CIP和SIP清洗和杀菌。非常适合应用于高洁净要求工艺系统中如，生物制药、食品饮料、乳制品、化工等领域。

可配置各种不同执行器，如电动、气动、手动可互换。

### Applications

The ball valve is a specially designed applied to pressure vessels and equipment, including tank emptying and feeding of tank bottom valve, turnkey tee and sealing automatic compensation design, therefore, with the high pressure and high temperature resistant, torque, etc., the characteristics of long service life, meet with CIP and SIP cleaning and sterilization. Very suitable for application in high clean technology system such as biological pharmacy, food and beverage, dairy products, chemical and other fields.

A configurable various actuators, such as electric, pneumatic, manual interchangeable.



No.KST-VQ003

SIZE	ISO5211	φDn	φD	φD2	L1	H	A
DN40	1.5"	F05	35.1	38.1	140	121	91
DN50	2"	F05	47.8	50.8	140	136	99
DN65	2.5"	F07	59.5	63.5	180	164	116
DN80	3"	F07	72.2	76.2	200	184	127

罐底三片式无滞留球阀

Tank bottom three-piece non-retention ball valve

### 各种进出口连接方式 Connections

