

气动隔膜阀 KST210

PNEUMATIC DIAPHRAGM VALVE

工作压力：0-10bar

工作温度：-40~150°C

驱动机构：气动控制

密封材质：EPDM,EPDM+TFM

阀体设计：直通阀体设计

阀体材质：316L（铸造，EN1.4409 CF3M）

接口尺寸：DN15-DN80

接口方式：KST210-1：焊式、KST210-2：焊卡式、
KST210-3:卡式

表面处理：外表面 $Ra \leq 0.5\mu\text{m}$ （SF1），
内表面 $Ra \leq 0.375\mu\text{m}$ （SF4）

接口标准：ISO,DIN,ASME BPE.3A,BS

Working pressure: 0-10bar

Working temperature: -40~150°C

Drive mechanism: pneumatic control

Seal material: EPDM+TFM, EPDM

Body design: straight through valve design

Body material: 316L (casting, CF3M EN1.4409)

Interface size: DN15-DN80

Interface type: KST210-1 type, KST210-2 type welding: welding,
KST210-3: card

Surface treatment: the outer surface of Ra is less than or equal to 0.5 m (SF1),

The inner surface of Ra is less than or equal to 0.375 m (SF4)

Interface standard: ISO, DIN, BPE.3A BS, ASME



驱动器

类型：KST-SS260

尺寸：DN15-DN80

主要材质：PC显示盖、不锈钢支座、阀杆、壳体

状态显示：气动开关状态显示如图

信号反馈：可加装FBS、FBS-SVC（电磁阀智能控制）

Drive

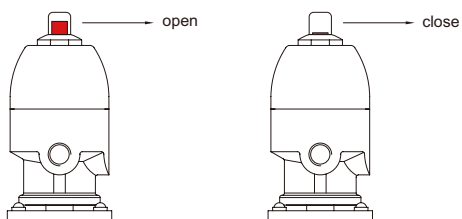
Type: KST-SS260

Size: DN15-DN80

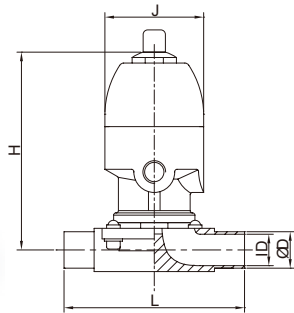
Main material: PC display cover, stainless steel support, valve stem, shell

Status display: pneumatic switch state display

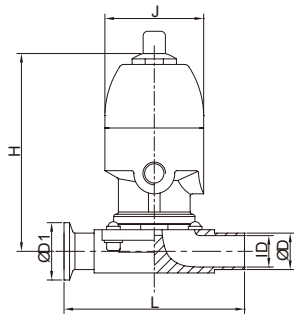
Signal feedback: can be installed FBS-SVC, FBS (solenoid valve intelligent control)



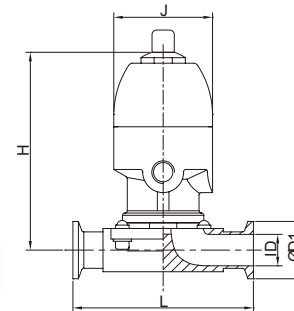
气动隔膜阀 PNEUMATIC DIAPHRAGM VALVE



No.KST210-1						
Size	ΦD	ΦD1	ID	L	H	J
DN20	22	-	18.1	108	128	96
DN25	28	-	22.1	120	128	96
DN32	35	-	28.5	153	210	110
DN40	40	-	34.8	153	210	110
DN50	52	-	47.5	173	260	137
DN65	67	-	60.3	216	310	157
DN80	88	-	81	254	310	157



No.KST210-1						
Size	ΦD	ΦD1	ID	L	H	J
DN20	22	50.5	18.1	112.5	128	96
DN25	28	50.5	22.1	123.5	128	96
DN32	35	50.5	28.5	156	210	110
DN40	40	50.5	34.8	156	210	110
DN50	52	64	47.5	181.5	260	137
DN65	67	77.5	60.3	216	310	157
DN80	88	106	81	254	310	157



No.KST210-1						
Size	ΦD	ΦD1	ID	L	H	J
DN20	-	50.5	18.1	117	128	96
DN25	-	50.5	22.1	127	128	96
DN32	-	50.5	28.5	159	210	110
DN40	-	50.5	34.8	159	210	110
DN50	-	64	47.5	190	260	137
DN65	-	77.5	60.3	216	310	157
DN80	-	106	81	254	310	157