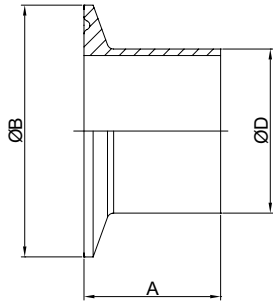




卡箍接头
Ferrule

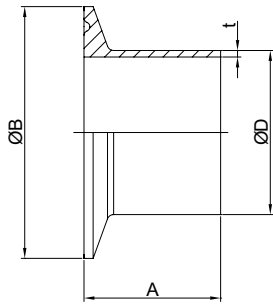


DIN

No.KST-F010

Size	A	B	D
DN10	18.0	34.0	12.0
DN15	18.0	34.0	18.0
DN20	18.0	34.0	22.0
DN25	21.5	50.5	28.0
DN32	21.5	50.5	34.0
DN40	21.5	50.5	40.0
DN50	28.0	64.0	52.0
DN65	28.0	91.0	70.0
DN80	28.0	106.0	85.0
DN100	28.0	119.0	104.0
DN125	38.0	145.0	129.0
DN150	38.0	167.0	154.0

卡箍接头
Ferrule

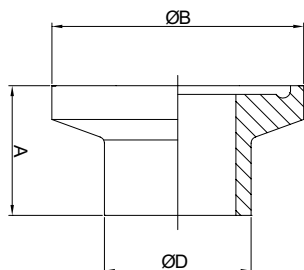


SMS

No.KST-F011

Size	A	B	D	t	t
Φ12	21.5	25.4	12.7	1.25	1.5
Φ19	21.5	50.5	19.1	1.25	1.5
Φ25	21.5	50.5	25.4	1.25	1.5
Φ32	21.5	50.5	31.8	1.25	1.5
Φ38	21.5	50.5	38.1	1.25	1.5
Φ51	21.5	64.0	50.8	1.25	1.5
Φ63	21.5	77.5	63.5	1.25	2.0
Φ76	21.5	91.0	76.2	1.5	2.0
Φ89	21.5	106.0	89.0	2.0	2.0
Φ102	21.5	119.0	101.6	2.0	2.0

卡箍接头
Ferrule



3A

No.KST-F012

Size	A	B	D	
14WMP	1/2"	12.7	25.2	12.7
	3/4"	12.7	25.2	19.1
14MMP	1/2"	21.5	25.2	12.7
	3/4"	21.5	25.2	19.1
14AMP	1/2"	28.6	25.2	12.7
	3/4"	28.6	25.2	19.1
14AMP-AWF(BPE)	1/2"	44.5	25.2	12.7
	3/4"	44.5	25.2	19.1